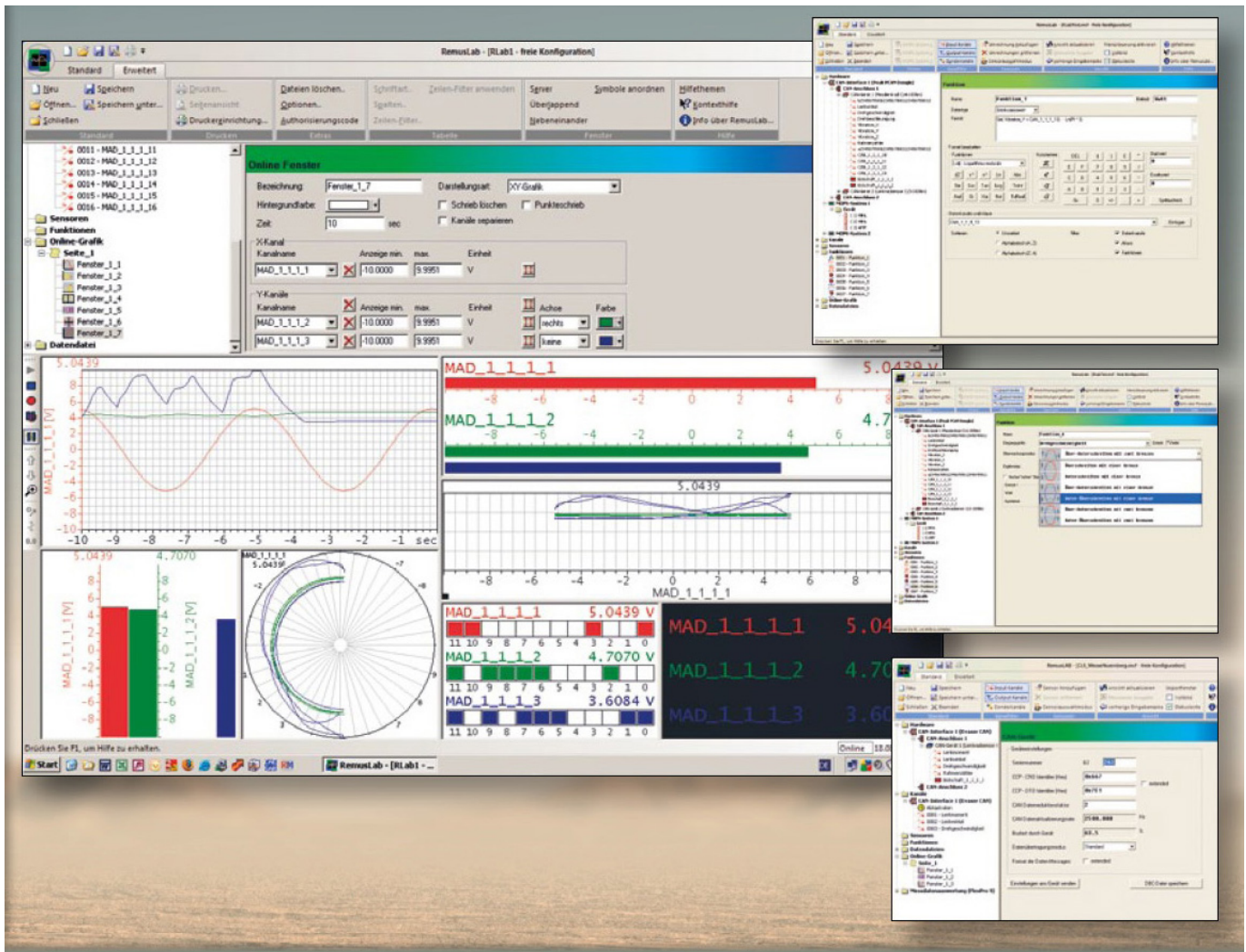


## RemusLAB Data Acquisitions Software



For all **KMT** and CAEMAX products and supported third party products RemusLAB has been developed to act as the comprehensive software application, from which all hardware devices can be parameterized and controlled. RemusLAB has been improved over years, so it now shows brilliant additional functionality and is simple to use.

First ever **KMT-PCM-Systems**, Dx-telemetry system, MOPS, CAN Interfaces, OBD, VarioPRO, CLS-E and CAEMAX Wheel Force Transducers as well as other supported third party USB devices can be initialized and synchronously used together within.

## Hardware Support with Parameterization:

- **KMT telemetry products** with bitparallel wordseriell or ethernet interfaces
- MOPS systems with all data interfaces including ethernet up to 250 kHz - optional > 1 MHz with ethernet switches
- parallel acquisition from multiple sources (CAN, ethernet & USB)
- all CAN interfaces supported by Vector, Kvaser and Peak
- direct support of CLS and steering wheel sensors and Wheel Force Transducers (WFT), TelRad
- direct support of ethernet and USB devices
- parallel acquisition from multiple sources (CAN, ethernet & USB)

## Online Computation:

- any mathematical formula and logical operations
- differentiation / integration
- filtering / smoothing
- threshold monitoring
- time channels and time controlled storage

## Data Recording:

- various data files with comprehensive triggering
- various sample rates (e.g. using the MOPS)
- National / DIAdem-TDM data format for **LabView**
- MLab-Mdf format
- UFF format (universal file format)
- ASCII for small data volume like min/max, protocol ...

